



PBCW News

Inside This Issue:	
Gallery	2-4
Scholarships	7
Wordturnings	4

Minutes From The April Meeting



Jim Davis displayed this very nice Oysterwood Box at the April Show and Tell Gallery.

President Eric Williams called the April, 2011 meeting of the Palm Beach County Woodturners to order at 9:2 AM on Saturday April 26th. Thirty seven members and guests were present at the opening of the meeting. The first order of business at the meeting was a demonstration of fluting techniques by Al Gruntwagin.

Al did not turn or do any actual fluting during his demonstration but he did show us the process of preparing the vessel for fluting. Designing and mak-

ing the tools for guiding the cutting tools and for laying out the pattern on the vessel body. Al showed us the tools he uses for the work and discussed special techniques for aligning the top and bottom of a fluted box and for finishing the turning after the fluting has been completed. Al has put a lot of

thought and work into the fluting process and it has brought a freshness to his turnings that many people really appreciate.

Al prefers to use sanding drums in a dremel type hand grinder to make his flutes. He also uses round carbide burrs on occasion in an air powered die grinder. Al gets some of his supplies from [VM Woodworking](#) in Smyrna, Georgia (770-434-9080).

After the demonstration Treasurer Bruce Williams reported that the club has \$7830.90 in the general fund and \$1289.50 in the Otto Dunder Memorial education fund. Bruce further reported that the club had lost a small amount on both the Royal Palm Beach Art Festival event and the Mount's Botanical Garden Spring Show and Sale.

Education chair Bill Jones reported that with the arrival of summer things have slowed and no new educational events

(Continued on page 4)



President Eric Williams holds the box in a box, turned by Gerhard Schwenke, he received as the winner of the April Bring Back Raffle.

Bowl Challenge At May Meeting

All persons attending the May meeting are challenged to bring a bowl for the instant gallery. Each participant will receive a raffle ticket and those selected will win gift certificates redeemable for valuable woodturning products from Craft Supply USA.

PBCW Events Schedule

May 28 Meeting, Okeehchee Nature Center
Jun. 25 Meeting, Okeehchee Nature Center

To remove your name from our mailing list, please [click here](#)

[Next Page](#)

Contact Us: President: [Eric Williams](#), 561-723-0032
V.P: [Gerhard Schwenke](#), (561)715-7075
Treasurer: [Bruce Williams](#), (561)626-8203
Editor: [Brian Rosencrantz](#), (561)667-3346



Bowl Of Eggs, Ralph Nettles, Various Woods



Vase, Loren Wolfe, Ash and Paint



Egg Chuck, Ralph Nettles, PVC



Antique Apothecary Box with Screw Lid,
Collected by John Buso



Spice Box with Acorn Box, Gerhard Schwenke,
Sapele, Rosewood



Above: Bowls, George Moskowicz, wood/acrylic resin



Above L and R and Below:
Segmented Bowls, Blake Patterson,
Various Woods



Above: Segmented Bowl, Jack Twelves,
Pine, Poplar, Mahogany



Left:
Bowl, Jim
Davis,
Distressed
Ash



Right:
Basketform
Box,
Brian
Rosencrantz,
Ash



Promoting the Art And Craft Of Woodturning



Above: Pedestal Bowl, Steve Hlasniecek,
Unknown Wood



Right: Vase, Steve Hlasniecek, Royal Poinciana

Meeting Minutes (contd.)

(Continued from page 1)

are currently being planned. However, he reminded those present that the club's ongoing scholarship program is still available to those enrolling in a recognized woodturning course.

[Click here](#) for more details.

A board meeting was scheduled for May 2 but it was later cancelled and replaced with a meeting immediately following the next regular meeting at the Nature Center. Any club member wishing to attend may do so.

It was decided to issue a bowl challenge to members for the May meeting. Winners will be selected by raffle and gift certificates will be given away as prizes..

The club voted to purchase a new shop vacuum for use at the Wednesday workshops.

There was some discussion of the lackluster sales at our last two events, especially the Mount's spring show. There was also discussion over whether to participate in the Mounts Orchid show next September. Both items were postponed for further discussion at a later date, Tim Rowe announced that David Ellsworth had expressed a desire to come to our area next Spring. Due to the expense involved in having David here the attendance fees for a demonstration and hands on classes would have to be raised to \$40 and \$140 respectively. Anyone interested in attending hands on classes should respond to the emails Tim will be sending to the membership.

Carl Schneider reported on a successful if lightly attended Earth Day event at Okeehchee.

The business portion of the meeting was followed by the Show and Tell Gallery presented by John Buso.

This month's bring back raffle was won by PBCW President Eric Williams.

Wordturnings: The Story of The Heart Of Mounts

By Brian Rosencrantz



In 2004 the state of Florida was struck by five hurricanes. In September of that year Hurricanes Francis and Jeanne scored direct hits on Palm Beach County leaving a path of destruction that even today, more than six years later, can be seen by those who remember the event.

In the wake of their passage these hurricanes left broken homes and business and permanent changes to the flora of our area.

One of the places hardest hit by the storms was Mounts Botanical Garden. Damage to the buildings and facilities were serious and the Garden spent many months rebuilding structures rent by the



Woodturnings (contd.)

(Continued from page 4)

fury of the winds.

Still more devastating to the nature of the Garden were the changes wrought to the flora that made the garden unique in South Florida. Tossed aside like matchsticks and broken like twigs were many of the magnificent trees that made Mounts a place of rare beauty in Palm Beach County. Rare non-native varieties like the Monkey Puzzle tree that once stood outside the pavilion, or the Bolivian Breadnut tree on the island were destroyed along with species native to Florida such as Sapodilla and Mahoganies. Several varieties of Eucalyptus and a stately Mulberry were uprooted and destroyed.

The staff of Mounts and the members of the volunteer organization Friends of Mounts faced a herculean clean up task. Heavy equipment was brought in to move some damaged trees to the parking area. The members of the Palm Beach County Woodturners were invited to take as much of the wood from the downed trees as they could carry. Crews from the club spent days cutting the trees in an attempt to save as much of the wood from the trees from the landfills as possible.

Later in the winter and spring of 2005 The Friends Of Mounts began a fundraising project to help with the recovery of the Garden. They asked the PBCW to participate and our members responded enthusiastically. Members donated their turnings to the Garden for a charity auction to raise money to help restore the garden. With organizational help from Mike Zimmerman and coordination by club Vice President Bob Brulotte the club created Project Mounts.

As the day for the auction approached the Friends Of Mounts announced the event naming it The Heart Of Mounts.

As a participant in the events of that time I was busy creating turnings to donate to the auction. One of these was a continuation of a series I had begun sometime previously that featured turnings suspended within other hollow form turnings. That piece is the focus of this story. When I heard of the name chosen for the event I felt as though fate had taken a hand and so that piece took on the name of The Heart Of Mounts.

The Heart Of Mounts was turned from spalted Tamarind (*Tamarindus indicus*)

and the heart suspended within was made from a piece of Quebracho brought to me by a friend from Argentina.

On the day of the event many members of the PBCW came to see the results of their efforts. As I recall more than thirty turnings were donated and all were quickly purchased by the public resulting in the collection of more than ten thousand dollars for the Gardens recovery effort.

I like many others members of the PBCW was proud to see what our artistry had done for the garden.

And yet, I was a little saddened to not know what had become of my prize piece The Heart Of Mounts. I asked after it and was amazed to learn that it had been selected to be put on permanent display in the Garden itself.

Over the years I made many visits to the Garden for shows and simply to appreciate the beauty of the place. However I never saw my creation again. I thought certainly someone had taken it home and made it a permanent fixture in their own household.

Then last Fall after the November show and sale Tim Rowe called and asked me to meet him at the train station on my way home from work in Ft.Lauderdale. When I met him he handed me a plastic bag from a grocery store and said that the club members at the last show had been given the object within and that Gerhard Schwenke had recognized it as my work.

With trembling fingers I opened the bag and found within the Heart Of Mounts I had not seen in nearly seven years! But, oh what a sight!





Wordturnings (contd.)

Apparently the Heart had fallen from some height and was now shattered!

The suspended heart was now broken in two with pieces of the support missing and the opening had split from the top to bottom. Additionally a piece had broken completely out of the body of the hollow form and splits from the top and bottom of the original side opening reached around the vessel almost far enough to break out a third of the body.

It was returned to me in the hopes that I could repair it but the damage was so severe that I almost despaired of ever restoring it to its original condition.

I studied the piece for weeks before deciding what I must do. Over time as the wood had dried it had raised stresses in the body of the piece that made it impossible to simply put the pieces back where they came from. I knew I could not completely hide the damage so I decided to while I must minimize the changes these new cracks were also now a part of the history of the piece.

I wanted to save as much of the original piece as possible so I decided against turning a new heart. I had to save the one within and the original collar from which it hung as well.

I began the project by gluing back the small piece broken from the body of the vase. I used Titebond II wood glue for this and most of the other gluing operations. Once the glue was permanently fixed I wrapped the body of the vase with rubber bands to gently apply pressure over time to bend the wood slowly back to shape. Meanwhile I went to work on the heart. I



mounted the collar in a jam chuck on the lathe and turned off the broken pieces that had previously supported the heart. I also turned down the collar where it originally fit into the top opening of the vessel. I then selected a similar piece of Quebracho

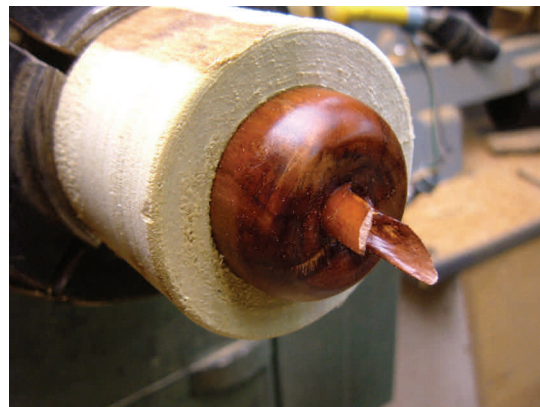


from my stock and turned an opening in one end to match the diameter of the new tenon and tapered the interior to a profile closely matching the original. I turned the new tenon on a glue block with the old collar fitted in place as shown below.



I made another jam chuck and inserted the broken heart into it and created an opening to accept a new tenon.

Once completed I carved away the sides and



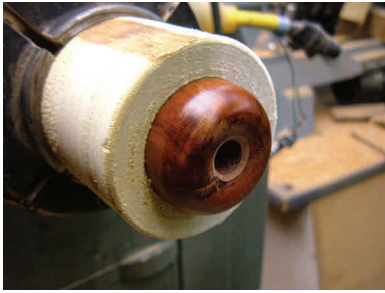
glued the assembly together. The picture below shows the reassembled heart, collar and suspension being finished.

By this time the rubber bands had done as much as they could to restore the original shape

[\(Continued on page 7\)](#)



Woodturnings (contd.)



(Continued from page 6)

of the vessel body so if gently opened the

crack as much as I dared and inserted Titebond II glue with a thin sliver of wood. I put the rubber bands back on and held the piece tightly with my hands until the glue had set sufficiently to remain while the glue reached full strength.

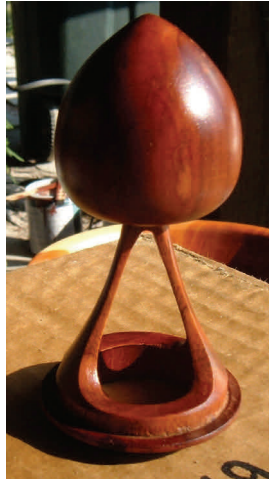
The vessel body was now returned as closely as it could be to its original shape except for the crack extending from the original top opening to the top of the side opening.

This was the most difficult of all the repairs to effect. The vessel walls are in-curving in this area and the best possible shape to resist bending in precisely the direction I needed to move them.

I wrapped the vessel in a cloth and applied pressure with a pair of automotive hose clamps as close to the top as I could get them without their slipping off.

Over a period of three weeks I gradually tightened the clamps a fraction of a turn at a time hoping not to create a new crack or open those previously repaired. Eventually I was able to close the crack more or less completely. I left the piece in this condition for a full week before releasing the clamps. Upon releasing the clamps the crack opened up somewhat. I filled the crack with medium CA glue and squeezed it into alignment with my hands holding it there until the glue had completely set.

Once I was certain the glue was permanent I began sanding the outside of the vessel back into shape where the various pieces did not precisely align. I refinished the vessel body and suspended heart with semi gloss Deft lacquer just as I had done when I first created the piece.



The final step was to reinsert the heart gluing it into place with medium CA glue.

The cracks that resulted from the fall can still be seen if one looks closely at the piece, though they tend to blend in with the zone lines of the spalting. The new suspension arms are sturdier than the originals and a slightly lighter color. Time and exposure to light will eventually make them darker and a closer match to the collar and heart.

I returned the Heart Of Mounts to the director's office during this year's Spring Show and Sale. I hope they will be more careful with it now. Creating the heart of Mounts was a labor of love and restoring it was like renewing an old friendship. Now that I know where it is to be found I'm sure I'll be visiting it more often.



Woodturning Scholarships Available

Anyone interested in receiving financial assistance from the PBCW to attend a recognized woodturning course may apply for a grant in the amount of \$250 or \$500 to assist with expenses. To apply for a grant simply complete a grant application and give it to a member of the education committee. The education committee members are: [Bill Jones](#), [Brian Rosencrantz](#) and [Al Gruntwagin](#). In return for the aid the scholarship winner must agree to provide one or two demonstrations for the club at regular meetings during the year following attendance at the course. Eligibility for the scholarships will be judged by the club's education committee.