



PBCW News

Volume 8, Issue 11: November 2010

PBCW Scores Successful Mounts Fall Show

In spite of continued gloom in the South Florida economy this year's Fall show at Mount's Botanical Garden was a pleasant echo of former good times.

Traffic at the show was steady and sales were good with total receipts of over \$5000.

Seventeen members took part in the show. There were woodturning demonstrations and info about the club and woodturning were presented.



Minutes From The October Meeting

The PBCW October 2010 meeting began with a demonstration by Lee Sky of some the skills he learned at Arrowmont this summer where he took a class with world famous artist woodturner Alain Mailand. Lee showed us how Alain creates the flower forms he is so famous for. This form is also the basis for the otherworldly tree forms he produces. Lee brought a set of the hand forged tools Alain makes and uses to turn these forms and others. Examples of what

(Continued on page 5)

To remove your name from our mailing list, please [click here](#)

[Next Page](#)

Nick Cook Dec. 18-21 !

Nick Cook, woodturner, teacher and artist will be coming to demonstrate for the Palm Beach County Woodturners Saturday, December 18, 2010 at the Okeehetee Nature Center. On Sunday, Monday and Tuesday, December 19-21 he will conduct hands on classes for a fortunate few students.

Nick is widely regarded as one of the finest teachers of fundamental woodturning

skills in the world today. Mastering tool control as taught by Nick Cook is the key to producing smooth flowing form and a fine finish with the least effort and time possible.

Nick Cook owns and operates the only full service woodturning studio in the metropolitan Atlanta area. He turns a variety of work including one-of-a-kind bowls and vessels along with his unique gift items—wine stoppers, baby rattles, rolling pins, spinning tops, honey dippers, and the like.

His work can be found in gift shops and galleries from coast to coast. He also provides turned parts for local furniture makers and millwork shops.

Nick is also in high demand as a teacher. He teaches and demonstrates at his studio, universities, craft schools, and woodworking shows throughout the US, Australia, and New Zealand.

(Continued on page 4)

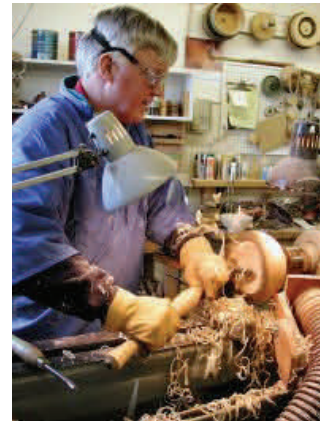
Nominating Committee Announces Slate for 2010 Elections

The PBCW nominating committee announces the following slate of officers and board members for the 2011 calendar year: President— John Buso, Vice President— Gerhard Schwenke, Treasurer— Bruce Williams, Secretary— Brian Rosencrantz, Membership Chair— Jerry Bassett, Past President- Tim Rowe, board members Carl Schneider, Bill Kruger, and Bill Jones. Two board positions are still open. Elections will be held at the November meeting and further nominations for all positions will be accepted from the floor prior to the vote.

Contact Us: President: [Tim Rowe](#), (561)379-7154
 V.P: [Gerhard Schwenke](#), (561)715-7075
 Treasurer: [Bruce Williams](#), (561)626-8203
 Editor: [Brian Rosencrantz](#), (561)667-3346

Inside This Issue:

Scholarships	5
Events Schedule	5
Gallery	2-4
AAW Challenge	5





October Members Gallery



Clockwise From Above: Gerhard Schwenke,
Natural Edge Bowl, Mahogany;
Bowl, Rosewood;
Lidded Vessel, Sea Grape;
Doll's Table with Place Setting and Floral Arrangement



Left and Above: Jim Davis,
Box, Red Mallee Burl and African Blackwood;
Natural Edge Nested Bowls, Mahogany



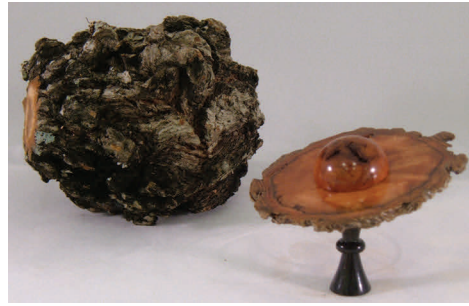
Left: Vase,
Carl
Schneider,
Olive

Right:
Oval Vessel
with Lid,
Brian
Rosencrantz,
Maple Burl,
Briar Burl,
Acacia





October Members Gallery



Clockwise From Above: Lee Sky, Tree Form; Saturn Box and Burl, Bottlebrush; Flower Form



Above and Right:
Bowl, Al Gruntwagin, Norfolk Island Pine;
Bowl, Pete Scheren, Norfolk Island Pine



Left: Segmented Bowl, Jack Twelves
Below: Bowl, Jack Twelves, Mahogany





Promoting the Art And Craft Of Woodturning

October Members Gallery



Clockwise From Above: Tim Rowe,
Toothpick Holders;
Tea Lights, Norfolk Island Pine



Right:
Lee Sky, Multi Axis Hollow Form



Nick Cook (contd.)

(Continued from page 1)

He grew up around his father's woodworking equipment and became interested in the art of woodturning in the mid-70s after several years in furniture design and manufacture.

A founding member of the American Association of Woodturners, Nick served six years on the board of directors, including one as vice president.

In addition to creating one-of-a-kind pieces and his staple gift items, Nick teaches and lectures on various woodturning topics, has written articles for several woodworking magazines, and produced two woodturning videos.



The Saturday demonstration will run from 9AM to 4PM. Bring your lunch or plan to make a quick trip to a local restaurant.

Please let [Bruce Williams](#), (561)626-8203 know ASAP if you are planning on attending. Advance and at the door are the same price, \$35 for the Saturday all day demo at the Okeeheelee

Nature Center in The Okeeheelee Park located in West Palm Beach on Forest Hill Blvd at the Fl. Turnpike.

The Hands On must to be paid and reserved in advance. \$135.00

We now have 15 Hands On participants scheduled.





October Minutes (contd.)

(Continued from page 1)

Lee learned at Arrowmont can be seen in this month's [gallery](#). Lee's class was partly funded by a grant from the Otto Dunder Memorial Education Fund. To learn more about these grants see the article below about Woodturning Scholarships.

After Lee's demonstration, PBCW president Tim Rowe called on the committee chairs for reports.

Treasurer Bruce Williams reported that there was over \$8900 in the club treasury. He expected to add about \$1400 in advance payments for the Nick Cook demonstration and hands on classes in December. He announced that three days of hands on classes had been filled. He further stated that other than the costs of the Nick Cook event the club had no immediately pending expenditures.

Education chair Bill Jones announced that he and Al Gruntwagin were currently conducting classes for six students from the Jupiter Adult education program. Bill also announced that the club has recently added eight new members from the classes former students.



Gerhard Schwenke, Show chairman, announced that the Mounts show would take place November 6-7 and participants were already signed up. It was determined that the PBCW should invite the South Florida Woodturning Guild to take part in the Mounts Fall Show.

Nominating committee chair John Buso stated that the slate of new officers and board members would be announced by email.

After reports Tim opened the floor for the discussion of new business.

A motion was made and seconded to purchase two Delta Midi lathes with stands, chucks and tools for \$1800 each to replace the aging mini lathes used at club workshops. After discussion the motion carried on a show of hands vote by the thirty six members present.

This month's bring back winner was George Miller who received a bowl turned by last month's winner Jack Twelves. The 50/50 raffle was won by Tim Rowe.

Woodturning Scholarships Available

Anyone interested in receiving financial assistance from the PBCW to attend a recognized woodturning course may apply for a grant in the amount of \$250 or \$500 to assist with expenses. To apply for a grant simply complete a grant application and give it to a member of the education committee. The education committee members are: [Bill Jones](#), [Brian Rosencrantz](#) and [Al Gruntwagin](#). In return for the aid the scholarship winner must agree to provide one or two demonstrations for the club at regular meetings during the year following attendance at the course. Eligibility for the scholarships will be judged by the club's education committee.

AAW Chapter Challenge Entry

The PBCW will hold a contest at the January meeting to determine what piece will be sent to represent the club at this exhibit.

Ground rules for each piece are:

- One piece per chapter
- Piece must fit in an 8" cube
- Weight limit is 3 pounds
- Entry fee is \$40
- Entry deadline is February 28, 2011
- All entered work must be for sale
- All pieces must remain with the exhibit for any traveled venues after the symposium
- Sales will be shared 70% with the chapter/or artist and 30% with the AAW
- Sold work will be shipped to the buyer at the end of all exhibits, and unsold work will be returned to the chapter.

PBCW 2010 Schedule Of Events

November	11/27 Meeting, Okecheelee Nature Center, WPB, Demonstrator: Lee Sky PBCW Elections
December	12/18 Meeting, Okecheelee Nature Center, WPB Demonstrator: Nick Cook 12/19-21 Hands On Classes, Nick Cook, WPB